

# CLINIQUEST (OSCE)

USING THE POWER OF OPTICAL MARK RECOGNITION TO PROVIDE A VISIBLE DIFFERENCE IN OSCE EFFICIENCY.



**CliniQuest is designed to make it easier to prepare an OSCE, simpler to maintain absolute control of the actual examination and faster to score and produce statistics following the examination.**

## Preparation

To begin the process of creating an OSCE, administrators can enter individual station

Alternatively, stations can be selected from QuestionBank, one of the other modules. Using QuestionBank adds another dimension because it allows the performance of each question to be analysed. In either case, the process is quick and easy.

## Running an OSCE

CliniQuest directs each candidate to the appropriate starting position on the circuit and, where appropriate, the session and/or the centre. They follow individually tailored answer sheets, ordered in sequence.

Each answer sheet is coded with information which identifies the candidate and circuit information, eliminating human error; and is completed by the candidate or used to input scores by an assessor.

## Scanning, scoring & reporting

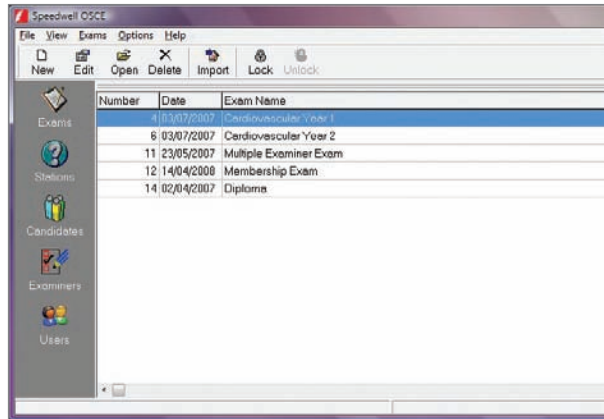
Completed sheets are then scanned at high speed by an Optical Mark Reader (OMR), which not only interprets the data with extreme accuracy but also detects if sheets are missing, regardless of the order in which they're scanned.

Within minutes of completing the scanning, the data is available for reporting purposes. A full data export facility is also available. A number of comprehensive reports are produced including:

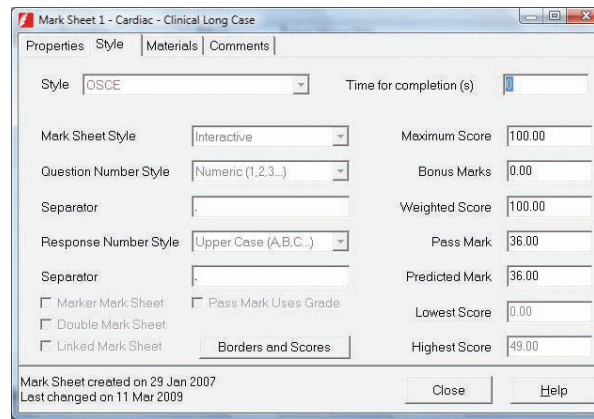
- Missing sheets/missing candidate report.
- Candidate listings incorporating station scores and overall score.
- Station Analysis (including a measure of subjective versus objective scores).
- Candidate feedback reports, either by station or 'learning outcome'.

Screenshots overleaf 

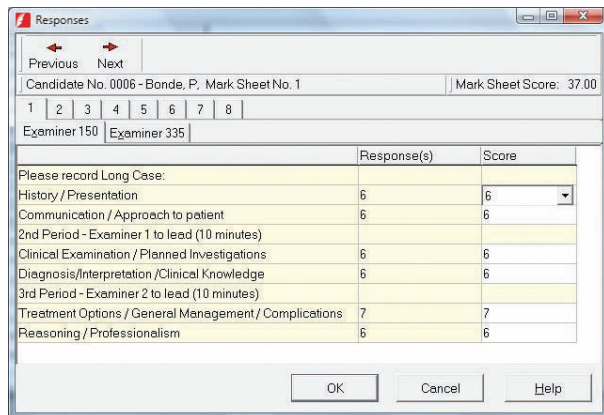
A SELECTION OF SPEEDWELL CLINIQUEST SCREENSHOTS ARE SHOWN BELOW.



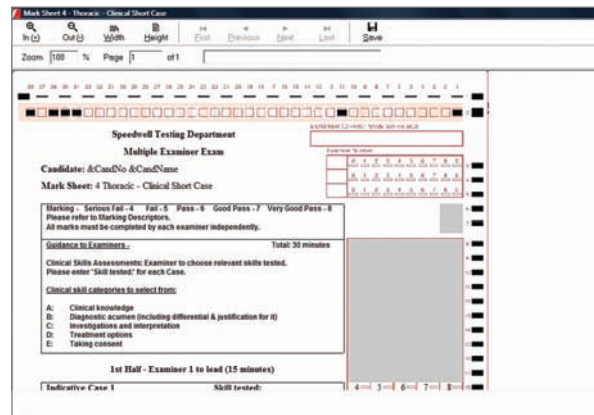
Examination List



OSCE Set-Up



Station Resources and Scores



Station Layout Template